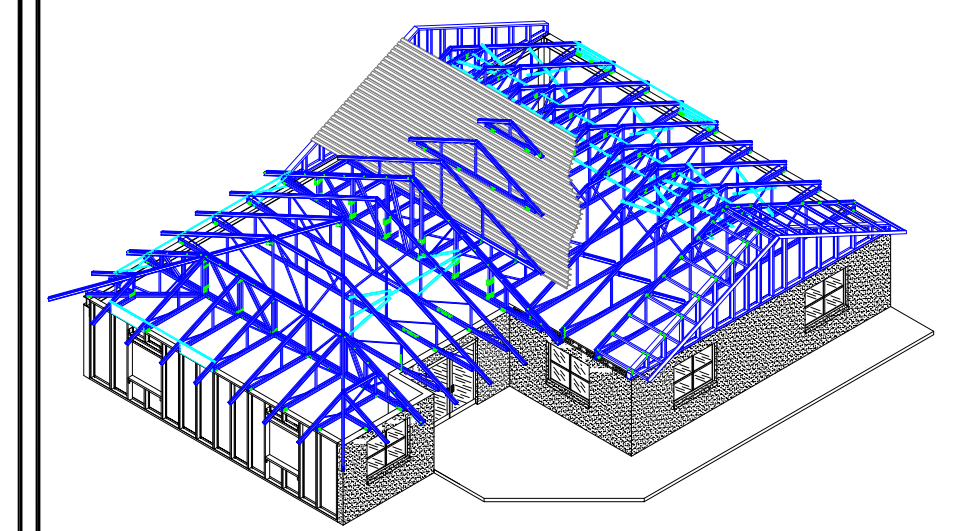


- General Notes:**
1. This drawing is provided as a visual reference only, for the convenience of Fabricators, Installers, Designers, Engineers and Architects who use TrusSteel products. A variety of construction methods are shown, for illustration purpose only, and as illustrations they do not constitute a recommendation or endorsement of any particular construction technique.
 2. Not all details that are referenced in the 3D view are shown at the bottom of this page.
 3. This detail is not representative of typical construction, but is for illustration purposes only.



The World Leader In CFS Truss Systems™

<p>Truss-to-Truss</p> <p>TS001 Series</p> <p>For Similar Connections Refer To Standard Details: TS001A, TS001B, TS001C, TS001D, TS001E and TS001F</p>	<p>Piggybacks</p> <p>TS003 Series</p> <p>For Similar Connections Refer To Standard Details: TS003A and TS003B</p>	<p>Chord Splices</p> <p>TS002A/TS012E</p> <p>For Similar Connections Refer To Standard Details: TS012F and TS012G</p>	<p>Chord Splices</p> <p>TS002B/TS012B</p>	<p>Pitch Break Conn.</p> <p>TS004 & TS016 Series</p> <p>For Similar Connections Refer To Standard Details: TS004A, TS004B, TS004C, TS004D, TS004E, TS004F, TS016A, TS016B, TS016C, TS016D, TS016E, TS016F, TS016G</p>	<p>Truss-to-Truss</p> <p>TS022 / TS022A</p>	<p>Ply-to-Ply Conn.</p> <p>TS023</p> <p>For Similar Connections Refer To Standard Details: TS023A, TS023B, TS024 and TS025</p>	<p>Truss-to-Truss</p> <p>TS025 Series</p> <p>For Similar Connections Refer To Standard Details: TS025A, TS025B, TS025C, TS025D and TS025E</p>	<p>Valley Connections</p> <p>TS026 Series</p> <p>For Similar Connections Refer To Standard Details: TS026A, TS026B</p>	<p>Truss-to-Bearing</p> <p>TS027</p> <p>For Similar Connections Refer To Standard Details: TS027A, TS027D and TS027E</p>
<p>Truss-to-Bearing</p> <p>TS027B</p> <p>For Similar Connections Refer To Standard Details: TS027C, TS027F and TS027G</p>	<p>Truss-to-Bearing</p> <p>TS028</p> <p>For Similar Connections Refer To Standard Details: TS028A, TS029 and TS029A</p>	<p>Truss-to-Bearing</p> <p>TS030/TS031</p> <p>For Similar Connections Refer To Standard Detail: TS043</p>	<p>Truss-to-Bearing</p> <p>TS031A/TS031B</p>	<p>Truss-to-Bearing</p> <p>TS034</p>	<p>Truss-to-Bearing</p> <p>TS035</p> <p>For Similar Connections Refer To Standard Detail: TS058 & TS058A</p>	<p>Truss-to-Bearing</p> <p>TS039 & TS040 Series</p> <p>For Similar Connections Refer To Standard Detail: TS039A, TS039B, TS039C, TS040A, TS040B, TS040C, TS047 and TS048</p>	<p>Outlooker</p> <p>TS041</p>	<p>Hip Framing</p> <p>TS056/TS056A</p>	<p>Truss-to-Truss</p> <p>TS060 Series</p> <p>For Similar Connections Refer To Standard Details: TS059, TS059A, TS059B, TS060, TS060A, TS060B, TS060C, TS061, TS061A, TS061B, TS062, TS062A, TS062B and TS062C</p>

Illustration Key:

- TrusSteel Trusses
- TrusSteel Construction Hardware
- Truss Bracing - Consists of lateral braces, diagonal braces, bridging, and blocking.
- Steel Deck

JOB NUMBER:	SHEET TITLE: 3D TrusSteel Illustration	
DATE: 02/21/24	DRAWN BY: ODT	SHEET NUMBER: 3D-1
SCALE: N.T.S.	CHECKED BY: WLB	

ALPINE TrusSteel™

www.TrusSteel.com

155 Harlem Ave., North Building, 4th Floor / Glenview, IL 60025 / (800) 755-6001