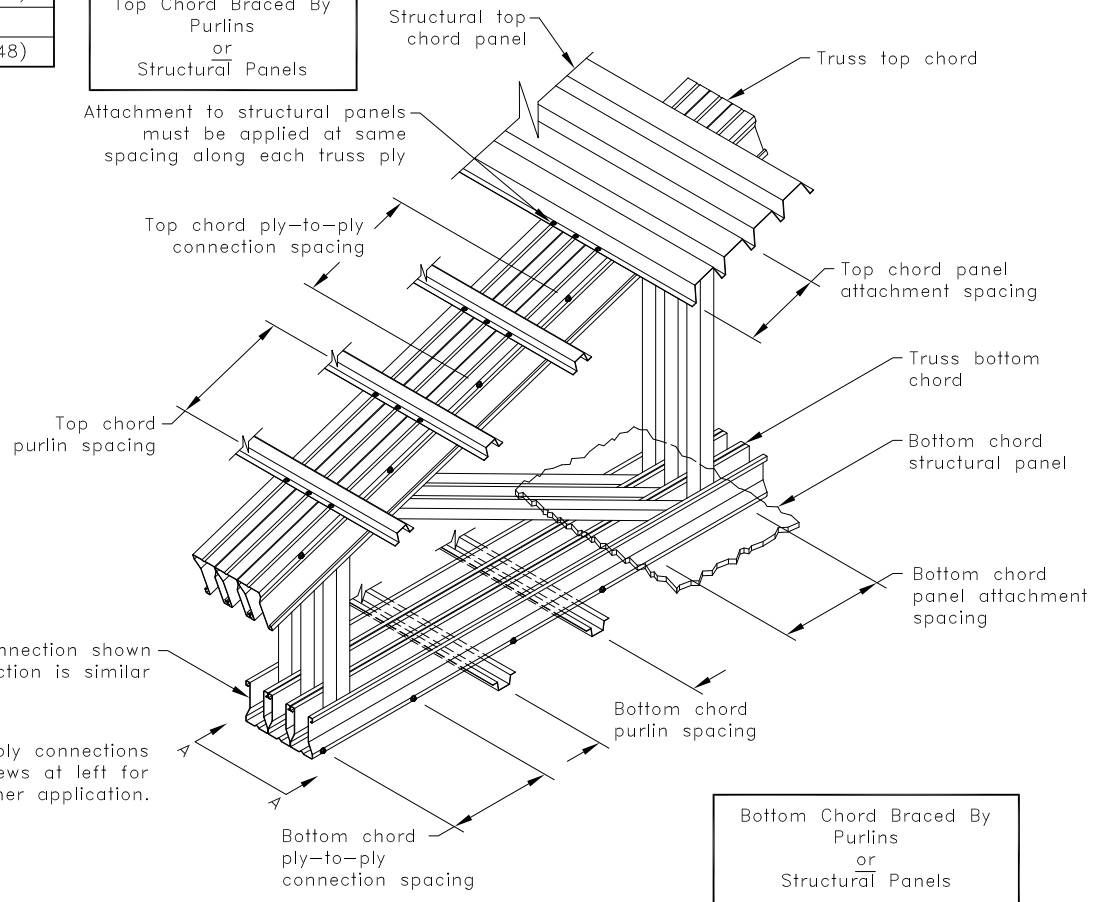


Type of Chord Bracing	Bracing Attached to Each Ply Member (Yes or No)	Minimum Spacing of the Ply-to-Ply Connection
Purlins	Yes	10' 0" O.C. (3048mm)
Purlins	No	Lesser of purlin spacing or 10' 0" (3048)
Structural Panel	Yes	10' 0" O.C. (3048mm)
Structural Panel	No	Lesser of purlin spacing or 10' 0" (3048)

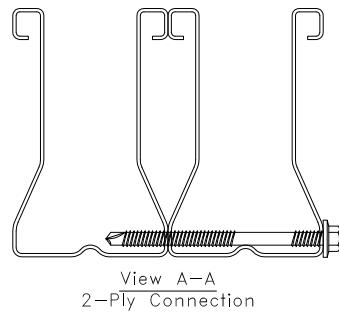
Notes:

- The spacing for ply-to-ply fasteners outlined above are minimum values.
- Additional fasteners may be required to distribute loads from the ply receiving a load to the other plies.
- Refer to TrusSteel details TS023, TS024, or TS024A for additional requirements when a TSJH hanger is used to support truss spans framing to the girder. Add fasteners if needed.
- Refer to approved truss drawings for any additional fasteners that may be needed.
- Ply-to-ply fasteners are required within 6" of a pitch break on each side.

Top Chord Braced By Purlins or Structural Panels



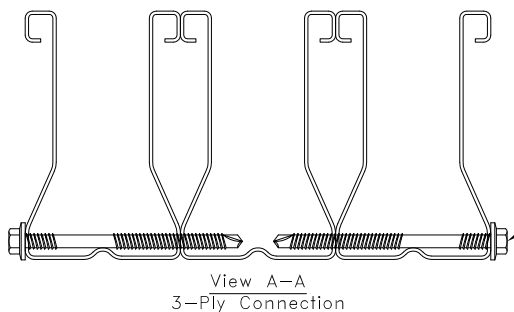
Bottom Chord Braced By Purlins or Structural Panels



14AMDB2.125 fastener for TSC2.75 chords
14AMD3.5 fastener for TSC3.00 or TSC4.00 chords

Three ply connection shown
Two ply connection is similar

For ply-to-ply connections
See views at left for fastener application.



14AMDB2.125 fastener for TSC2.75 chords
14AMD3.5 fastener for TSC3.00 or TSC4.00 chords

General Notes:

1. Purlins or structural panels must be adequately attached to at least one ply of the truss assembly along the entire top chord and bottom chord length.
2. Refer to approved truss drawings for chord bracing assumptions.
3. Refer to TrusSteel Technical Bulletin 01.04.20 for important information regarding ply-to-ply connections.

TrusSteel[®]
www.TrusSteel.com

Multiple Member Truss Ply-To-Ply Connections

Standard Detail:
TS057
Date:
07/16/12

Florida: 1950 Marley Drive / Haines City, FL 33844 / (800) 755-6001
Missouri: 13389 Lakefront Drive / Earth City, MO 63045 / (800) 326-4102

ITW Building Components Group, Inc. shall not be responsible for any performance failure in a connection due to a deviation from this detail. Any variation from this detail shall be approved in advance by ITW Building Components Group, Inc.

TrusSteel Detail Category:
Ply-To-Ply Connections