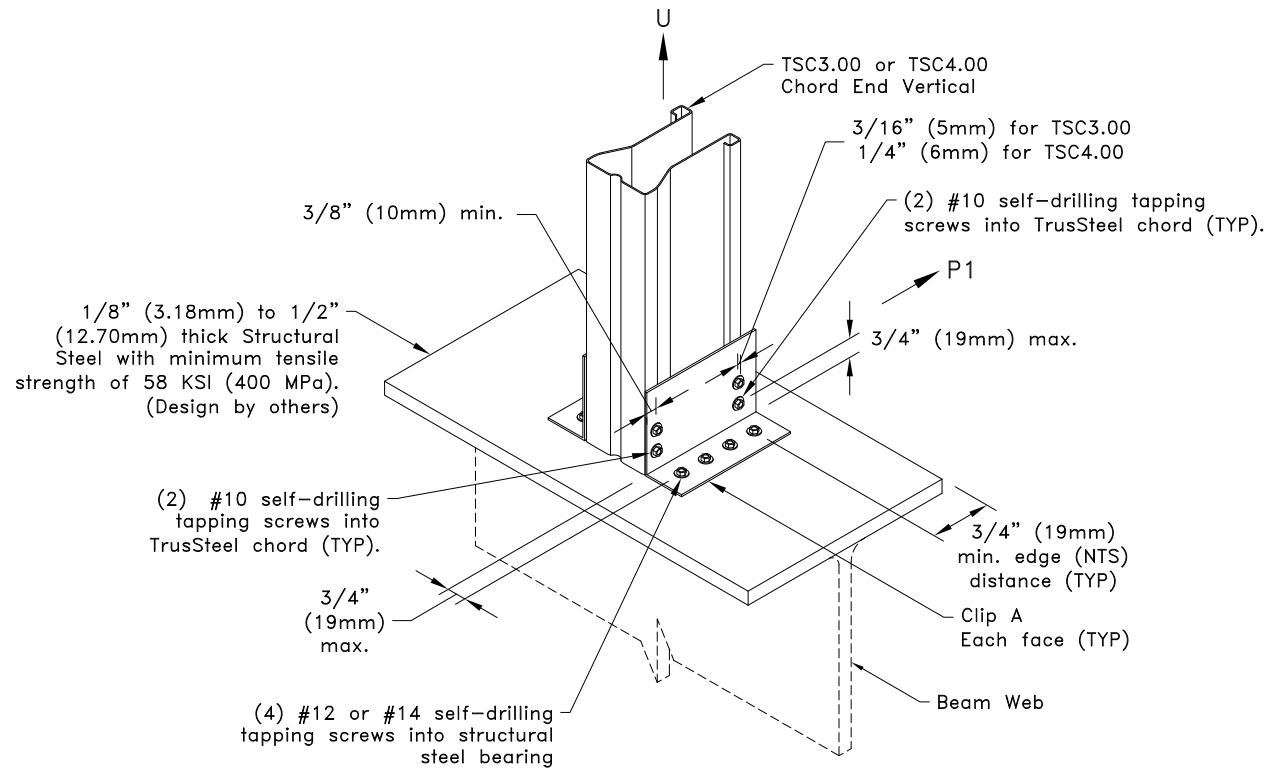


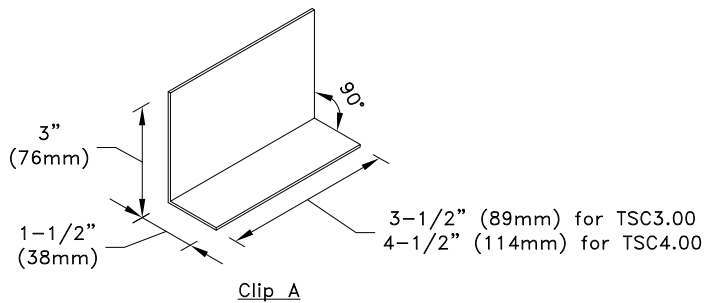
Allowable Loads lbs (kN) ^A		
Chord	Clip on both faces	
	U	P1
28TSC3.00	1310 (5.83)	650 (2.89)
33TSC3.00	1580 (7.03)	790 (3.51)
43TSC3.00	2030 (9.03)	1130 (5.03)
54TSC3.00	2030 (9.03)	1330 (5.92)
28TSC4.00	1470 (6.54)	730 (3.25)
33TSC4.00	1770 (7.87)	890 (3.96)
43TSC4.00	2030 (9.03)	1250 (5.56)
54TSC4.00	2030 (9.03)	1480 (6.58)
68TSC4.00	2030 (9.03)	1640 (7.30)
97TSC4.00	2030 (9.03)	1740 (7.74)

A. Allowable loads shown are not in combination.



General Notes:

1. This detail is for 1-Ply or 2-Ply truss only, for 3-Ply trusses contact a TrusSteel engineer.
2. Clip is required on both faces, attach the second clip to the opposite face of the chord as detailed.
3. #10SDS Screw end distance and edge distance is 9/32" (7mm) minimum, except as shown. #10SDS Screw spacing is 9/16" (14mm) minimum.
4. #12SDS & #14SDS Screw end distance and edge distance is 3/8" (10mm) minimum. #12SDS & #14SDS Screw spacing is 3/4" (19mm) minimum.
5. Do not overdrive screws. Overdriven screws may strip out TrusSteel chord.
6. Do not drive screws into area of beam flange directly above beam web.
7. To select proper self-drilling tapping screw for structural steel thickness refer to screw manufacturer's recommendations. Refer to manufacturer's specification and code approval regarding proper installation of #12 or #14 self-drilling tapping screws into steel thickness shown above.
8. Cold-Formed Steel calculations are per the 2020 supplement to AISI 2016 "North American Specification for the Design of Cold-Formed Steel Structural Members" (S100-16/S2-20).



Clip A
16g ASTM A653 SS Grade 33 Class 1 G60
Bare metal thickness: (t) = 0.0538" (1.37mm)



www.TrusSteel.com

155 Harlem Ave., North Building, 4th Floor / Glenview, IL 60025 / (800) 755-6001

**TSC3.00 or TSC4.00 Chord
End Vertical Attachment To
Structural Steel Bearing Using
Screws**

Alpine, a division of ITW Building Components Group, Inc. shall not be responsible for any performance failure in a connection due to a deviation from this detail. Any variation from this detail shall be approved in advance by Alpine, a division of ITW Building Components Group, Inc.

Standard Detail:
TS075C

Date:
06/01/22

TrusSteel Detail Category:
Truss-To-Bearing: Structural Steel