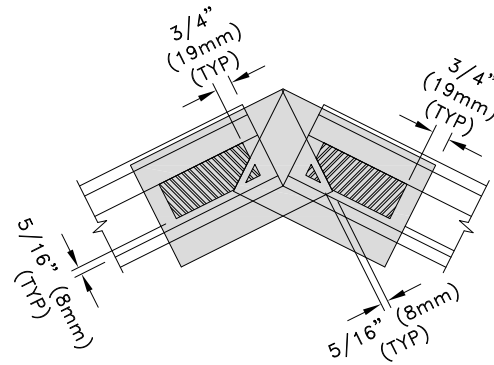
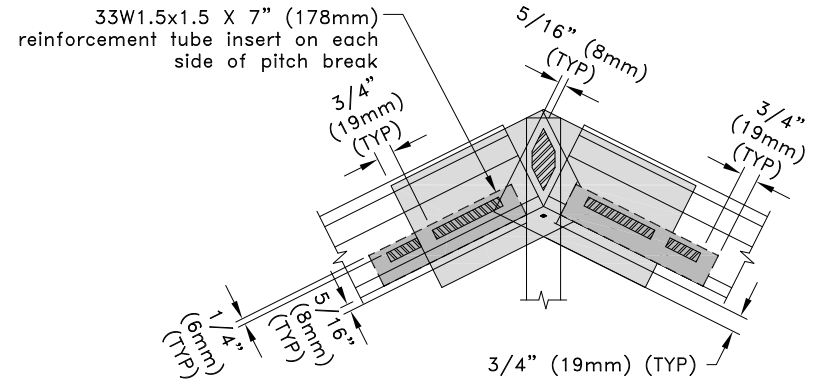


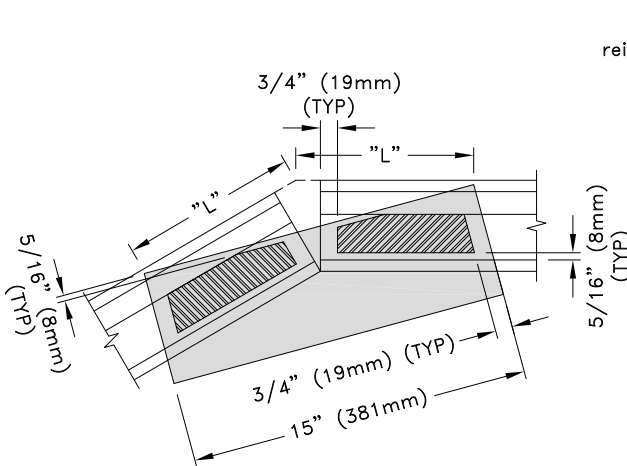
**Fasteners Through The Lapped Area**  
43TSBUC5.0 or 54TSBUC5.0  
Bent-U Pitch Break Connector



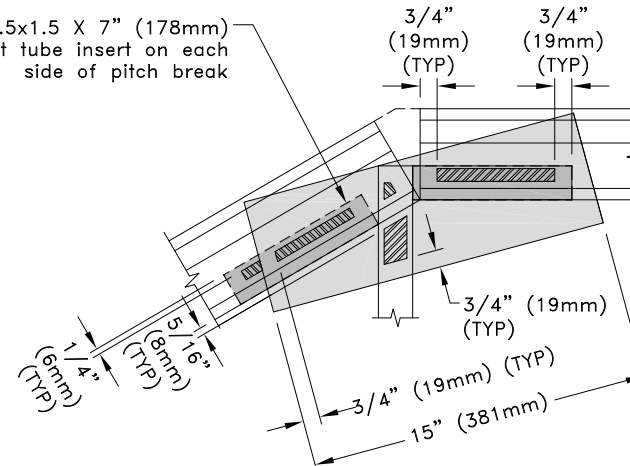
**Fasteners Through The Chord Area**  
43TSBUC5.0 or 54TSBUC5.0  
Bent-U Pitch Break Connector



**Fasteners Through The Web Area**  
43TSBUC5.0 or 54TSBUC5.0  
Bent-U Pitch Break Connector




**Fasteners Through The Chord Area**  
54TSSPC5.0  
Straight Pitch Break Connector



**Fasteners Through The Web Area**  
54TSSPC5.0  
Straight Pitch Break Connector

**General Notes:**

1. SDS = Self-Drilling Tapping Screw.
2. Fastener spacing and end distance is 3/4" (19mm) minimum, except as shown.
3. Refer to approved truss drawings for required fastener type and quantities for each fastener contact area.
4. Fastener contact areas that coincide with other contact areas may use a common fastener for both areas. This will result in a reduction in the total number of fasteners required at the pitch break joint.
5. Reinforcement tube to be attached to the chord with a minimum of (4) #14SDS fasteners from each face. See approved truss drawing for total quantity of fasteners to be applied into chord area.
6. Lengths "L" are equal.
7.  = Fastener contact area.



www.TrusSteel.com

155 Harlem Ave., North Building, 4th Floor / Glenview, IL 60025 / (800) 755-6001

**TSC3.00 or TSC4.00 Reinforced  
Pitch Break Connector  
#14SDS Fastener Areas**

Alpine, a division of ITW Building Components Group, Inc. shall not be responsible for any performance failure in a connection due to a deviation from this detail. Any variation from this detail shall be approved in advance by Alpine, a division of ITW Building Components Group, Inc.

**Standard Detail:**

TS016C

**Date:**

06/01/22

**TrusSteel Detail Category:**

Pitch Break Connections