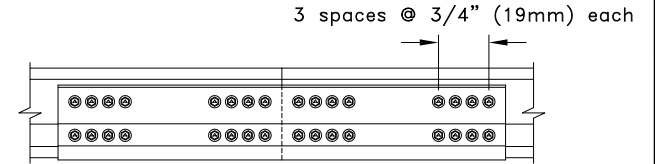
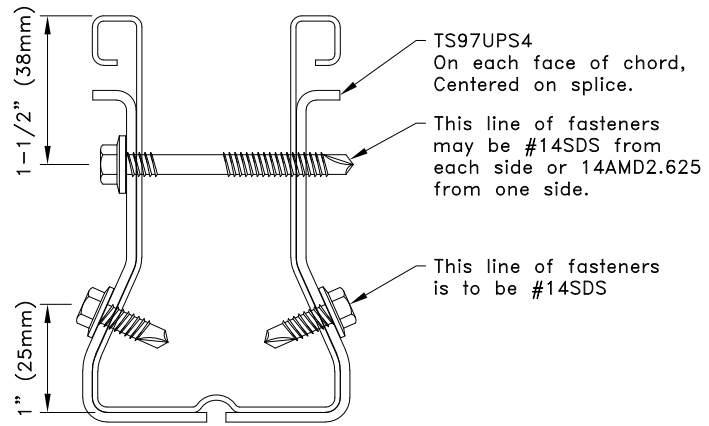


Detail "A"



Detail "D"

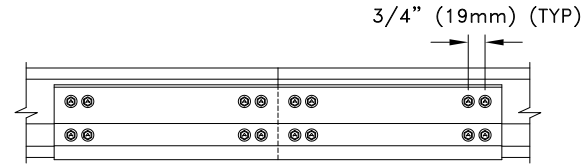


TSC4.00

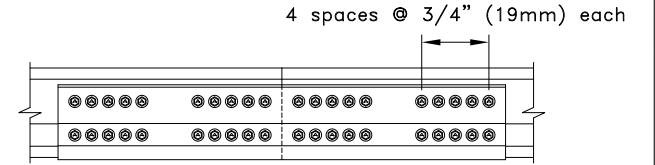
TS97UPS4
On each face of chord,
Centered on splice.

This line of fasteners
may be #14SDS from
each side or 14AMD2.625
from one side.

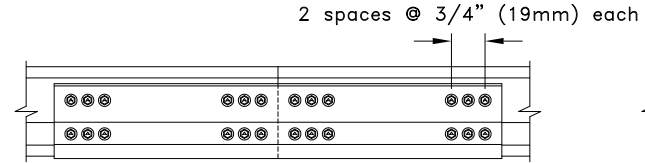
This line of fasteners
is to be #14SDS



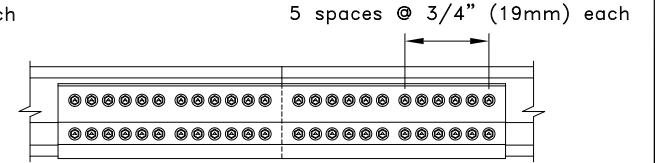
Detail "B"



Detail "E"



Detail "C"



Detail "F"

General Notes:

1. SDS = Self-Drilling Tapping Screw.
2. Fastener spacing and end distance is 3/4" (19mm) minimum.
3. Fasteners may be #14SDS or 14AMD2.625. Refer to approved truss drawings for fastener type and detail call out.
4. Dimensions are typical for both sides of splice per splice detail.

www.TrusSteel.com

**TSC4.00 Splices Using The
TS97UPS4 Universal Piece**

Alpine, a division of ITW Building Components Group, Inc. shall not be responsible for any performance failure in a connection due to a deviation from this detail. Any variation from this detail shall be approved in advance by Alpine, a division of ITW Building Components Group, Inc.

Standard Detail:
TS012B
Date:
06/01/22

TrusSteel Detail Category:
Chord Splices