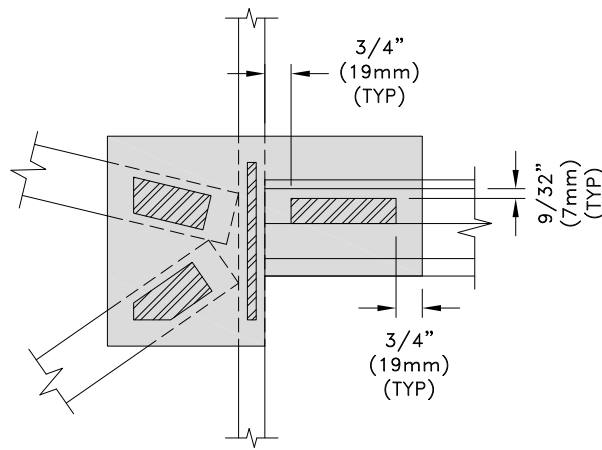
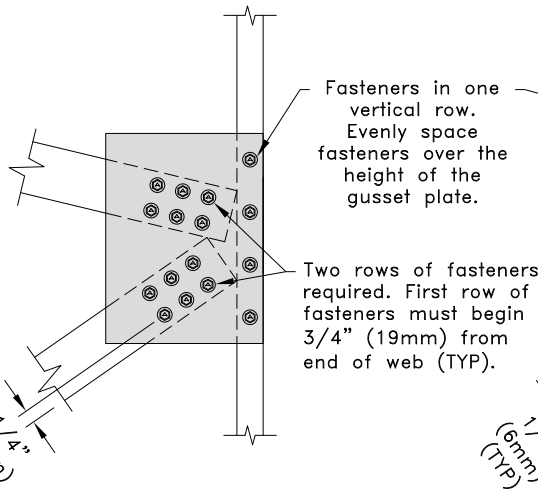


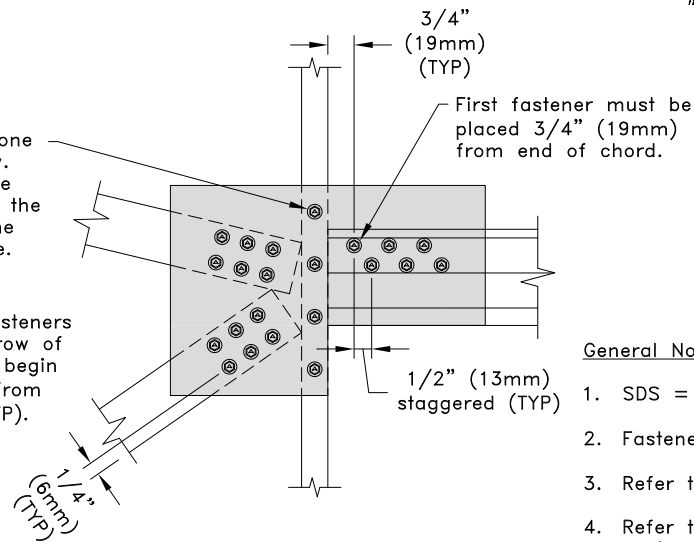
**K-Web Fastener Area Without Chord**



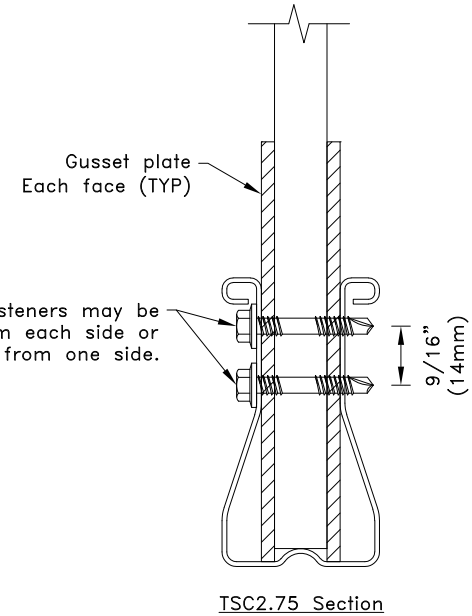
**K-Web Fastener Area With Chord**



**K-Web Fastener Locations Without Chord**




**K-Web Fastener Locations With Chord**



**TSC2.75 Section**

**General Notes:**

1. SDS = Self-Drilling Tapping Screw.
2. Fastener spacing and end distance is 3/4" (19mm) minimum except as shown.
3. Refer to approved truss drawing for gusset size, gauge and grade.
4. Refer to approved truss drawings for required fastener type and quantities for each member connected to gusset plate.
5. If K-Web diagonals are 3/4" (19mm) wide, one row of fasteners is adequate.
6.  = Fastener contact area.



[www.TrusSteel.com](http://www.TrusSteel.com)

155 Harlem Ave., North Building, 4th Floor / Glenview, IL 60025 / (800) 755-6001

**TSC2.75 Gusset Plate Fastener Placement**

Alpine, a division of ITW Building Components Group, Inc. shall not be responsible for any performance failure in a connection due to a deviation from this detail. Any variation from this detail shall be approved in advance by Alpine, a division of ITW Building Components Group, Inc.

**Standard Detail:**  
TS004F

**Date:**  
06/01/22

**TrusSteel Detail Category:**  
Pitch Break Connections